



## M.V.G.S. COVID GEO-QUIZ No. 2.

### HEALTH & SAFETY



1. Health & safety issues are an important part of a field geologist's training. Assess any risks that might be encountered in examining this rock.



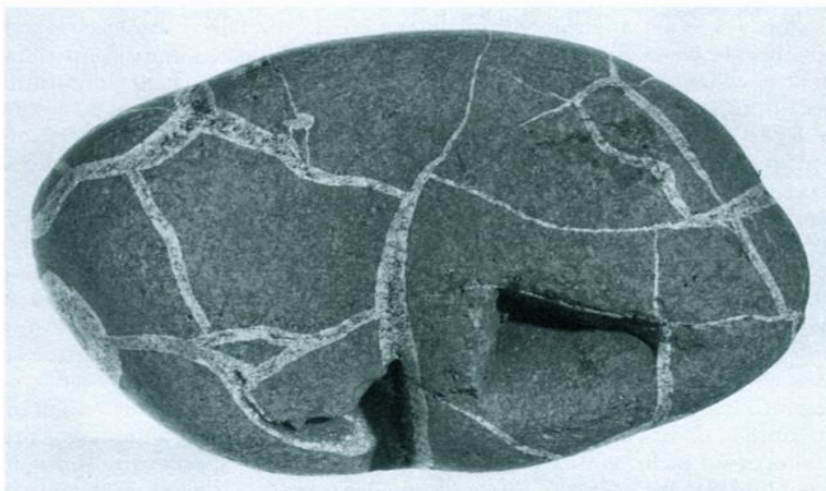
2. What on Earth is this?



3. What on Earth is this?



4. What is this? Hint: It is of significance to Mole Valley geologists.



5 & 6. What is shown here? The lower specimen came from the cliff in the above photo.





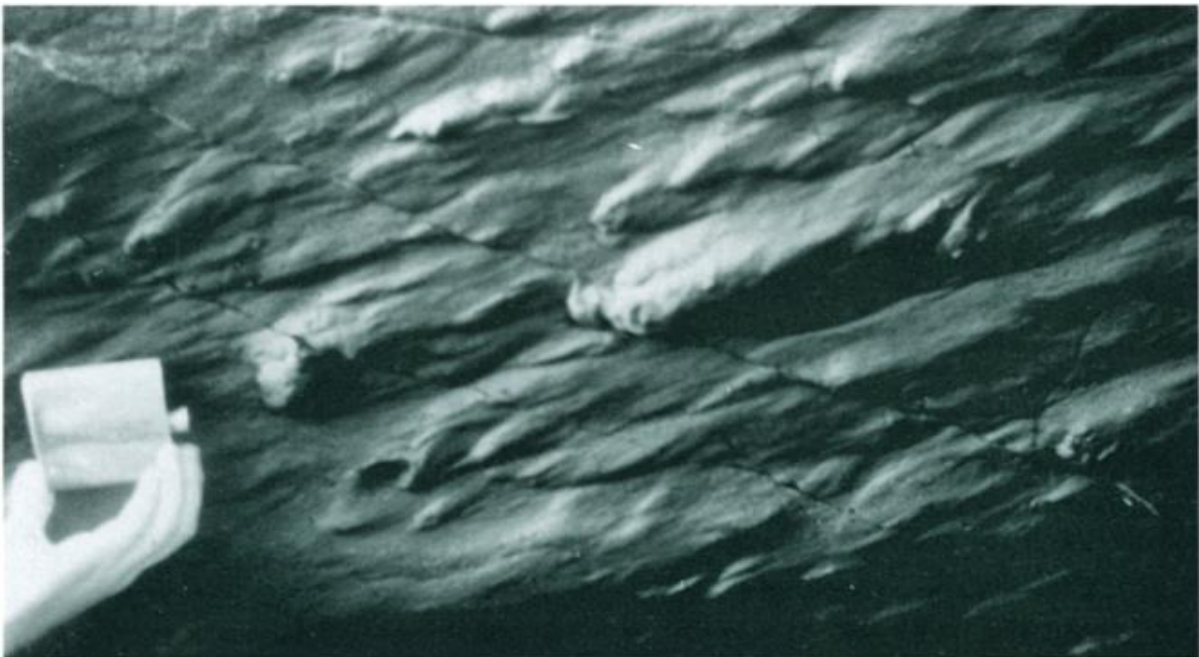
7. What on Earth is this feature?



8. What sort of rock? Associated with 7. How formed? Curly whirly shape is a clue.



9. What are the curious features to be seen in this specimen?  
Hint: The rock will dissolve in dilute hydrochloric acid.



10. Ignoring the hip flask, what features are shown here? In what depositional environment are they often seen?

- THE END -

For answers email [r.selley@btinternet.com](mailto:r.selley@btinternet.com)

